

How To Connect Weight Scale

Weight Scale Configuration

Step1: Change Setting In EXE

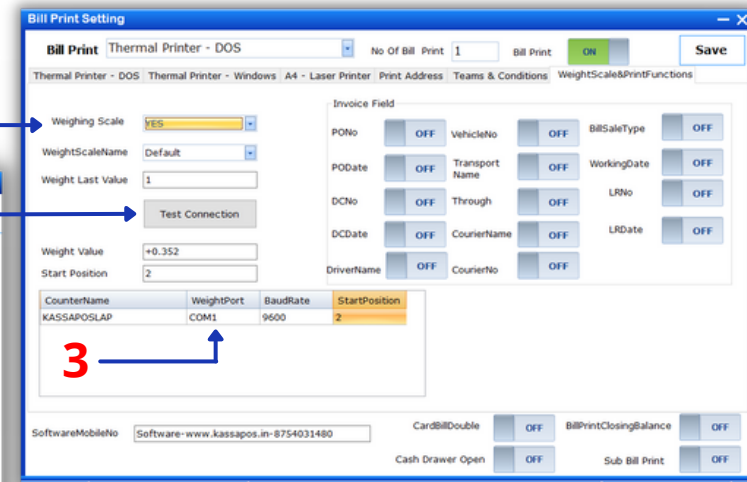
Open EXE->Utils->Bill Print Setting->WeightScale&PrintFunction

1 →



2 →

4 →



5 →

3 →

1 →

Click on Bill Print Setting

2 →

Change Weight Scale "No" To "Yes"

3 →

Enter the "Weight Port" And "BaudRate"

4 →

When you click "Test Connection" the weight value and start position will be calculated automatically.

5 →

Click on "Save"

Weight Scale Configuration

Step2: Now Check In Billing Screen

COMPANY NAME

BILLING-POS

Customer Name

Bill No 1

Bill Date 04/02/2022

Cashier : CASHIER1

SNo	ProductCode	Description	UOM	Quantity	Sale Rate	Dis(%)	Dis Amt	GST(%)	Amount
1	1	TOMATO	KGS		25.00	0	0.00	0.00	0.00

Qty : 0 Items : 0

Stock : 0.000

Remarks

PCS : 0 KGS : 0.000

LogOn : ADMIN Standard V.7.1 Time : 04-02-2022 12:20:17 PM KASSAPOS LAP Help Desk : 9500092480 Powered By : www.kassapos.in

1 → In Billing Screen Select The Product

2 → The cursor automatically move to quantity and press the "Enter" key. The weight will be calculated automatically.

COMPANY NAME

BILLING-POS

Customer Name

Bill No 1

Bill Date 04/02/2022

Cashier : CASHIER1

SNo	ProductCode	Description	UOM	Quantity	Sale Rate	Dis(%)	Dis Amt	GST(%)	Amount
1	1	TOMATO	KGS	0.500	25.00	0	0.00	0.00	12.50
2									

Qty : 0.5 Items : 1

Stock : 0.00

Remarks

PCS : 0 KGS : 0.500

LogOn : ADMIN Standard V.7.1 Time : 04-02-2022 12:20:25 PM KASSAPOS LAP Help Desk : 9500092480 Powered By : www.kassapos.in

Note: If The Value Is Not Automatically Calculated then Check The Above Settings And Select "COM' Port.